

Specification

Nominal Voltage	12V
Nominal Capacity(20HR)	270Ah at 1.80V/cell @25°C/77°F
Watts(15min Rated)	810 Watts/cell at 1.67V/cell @25°C/77°F
Dimension	Length 522 3mm (12.99 inches)
	Width 268 2mm (10.55 inches)
	Container Height 220 3mm (8.66inches)
	Total Height (with Terminal) 226 1mm (8.90inches)
Approx Weight	Approx 72.5 kg (159.9 lbs)
Terminal	T11
Container Material	ABS
Rated Capacity	270.0 AH/25.0A (20hr , 1.80V/cell,25°C/
	240.0 AH/30.0A (8hr, 1.80V/cell,25°C/77°F)
	222.5 AH/44.5A (5hr, 1.75V/cell,25°C/77°F)
	193.8 AH/64.6A (3hr, 1.75V/cell,25°C/77°F)
	165.0 AH/165.0A (1hr, 1.60V/cell,25°C/77°F)
Max. Discharge Current	5000A (PHCA)
Internal Resistance	Approx 2.5mΩ
Operating Temp.Range	Discharge : 15 50°C (5 122°F)
	Charge : 0 40°C (32 104°F)
	Storage : 15 40°C (5 104°F)
Nominal Operating Temp. Range	25 3°C (77 5°F)
Equalize Charge	Initial Charging Current less than 75.0A.Voltage 13.8V~14.4V at 25°C(77°F)Temp. Coefficient -30mV/°C
Float Charge	No limit on Initial Charging Current Voltage 13.5V~13.8V at 25°C(77°F)Temp. Coefficient -20mV/°C
Capacity affected by Temperature	40°C (104°F) 103%
	25°C (77°F) 100%
	0°C (32°F) 86%
Self Discharge	Leoch LCP series batteries may be stored for up to 9 months at 25°C(77°F) and then a freshening charge is required. For higher temperatures the time interval will be shorter.



Applications

- ◆ UPS (High rate)
- ◆ Emergency power supply
- ◆ Banks & Financial Markets
- ◆ Hospitals & Testing Laboratories
- ◆ Industrial Process Control Facilities
- ◆ Date & Network Operations Centers

Compliant Standards

- ◆ IEC60896-21/22:2004
- ◆ BS 6290 Part 4



Constant Current Discharge (Amperes) at 25 °C (77°F)

F.V/Time	5min	10min	15min	20min	25min	30min	45min	1h	1.5h	2h	3h	4h	5h	8h	10h
1.85V/cell	435.0	369.0	334.0	300.8	262.4	229.9	167.3	132.0	96.5	78.8	59.4	48.8	41.5	29.3	24.4
1.80V/cell	516.0	409.7	363.0	322.5	278.7	242.5	175.7	139.7	101.9	83.0	62.0	50.8	43.1	30.0	25.0
1.75V/cell	588.0	448.7	390.7	341.3	293.9	257.0	186.3	148.3	107.3	86.8	64.6	52.7	44.5	30.6	25.2
1.70V/cell	649.2	487.5	419.0	360.7	311.4	272.5	195.3	154.3	111.3	89.9	66.3	53.9	45.4	31.0	25.5
1.67V/cell	714.6	523.5	440.2	379.5	326.1	284.5	202.3	160.1	115.1	92.6	68.3	55.1	46.1	31.3	25.7
1.60V/cell	771.0	558.0	464.0	396.8	340.8	295.5	209.0	165.0	118.4	95.1	69.4	55.9	47.0	31.8	26.2

Constant Power Discharge (Watts) at 25 °C (77°F)

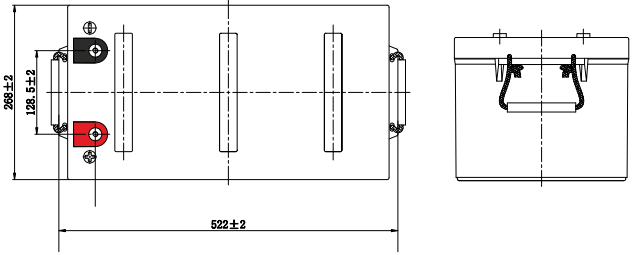
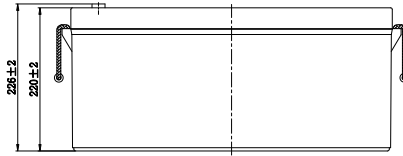
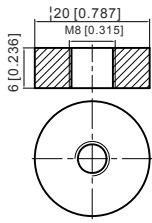
F.V/Time	5min	10min	15min	20min	25min	30min	45min	1h	1.5h	2h	3h	4h	5h	8h	10h
1.85V/cell	815.6	702.9	644.6	586.1	514.1	452.7	332.4	264.0	193.5	158.3	119.9	98.8	84.3	59.8	50.0
1.80V/cell	954.6	771.0	693.4	622.7	542.0	474.9	347.3	278.2	203.5	166.3	124.8	102.6	87.2	61.1	51.2
1.75V/cell	1071.2	832.5	738.1	652.3	566.5	499.4	366.5	294.1	213.4	173.1	129.5	106.0	89.9	62.1	51.6
1.70V/cell	1163.0	892.3	781.7	682.4	594.7	525.3	381.9	304.2	220.5	178.7	132.7	108.4	91.4	62.8	52.0
1.67V/cell	1253.7	942.3	810.0	709.6	616.5	543.7	392.7	313.4	226.6	183.4	136.2	110.3	92.6	63.4	52.4
1.60V/cell	1318.4	984.2	838.4	731.0	635.6	557.8	401.3	320.5	231.3	186.8	137.4	111.4	94.0	64.1	53.1



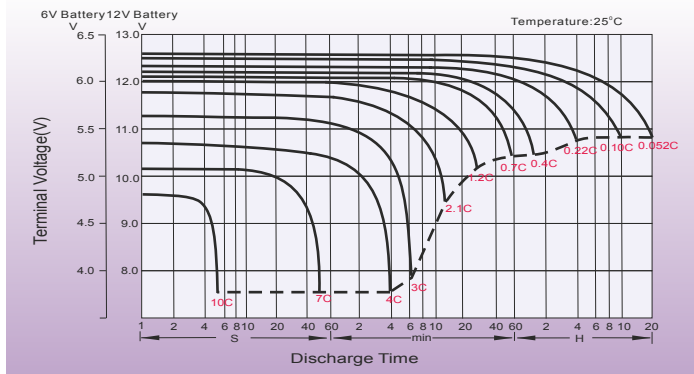
Dimensions

T11 Terminal

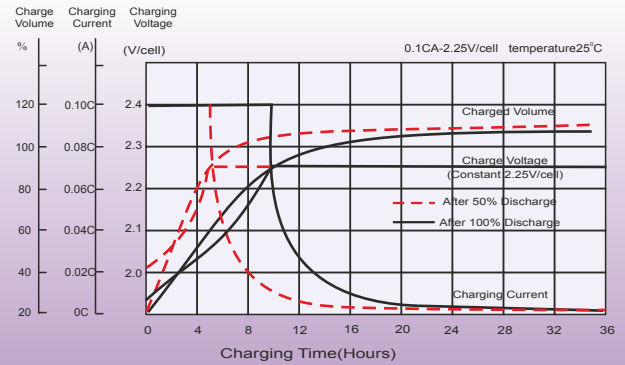
Unit: mm [inches]



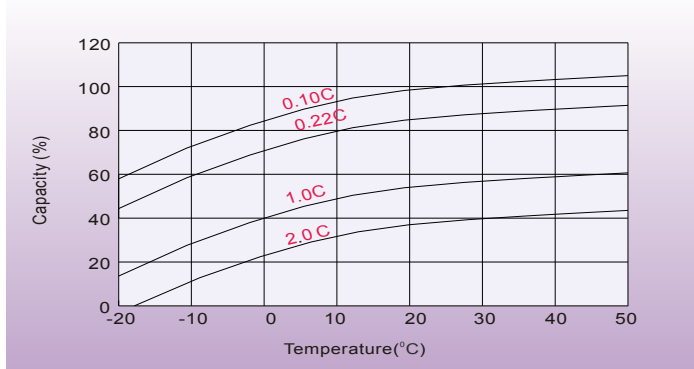
Discharge Characteristics



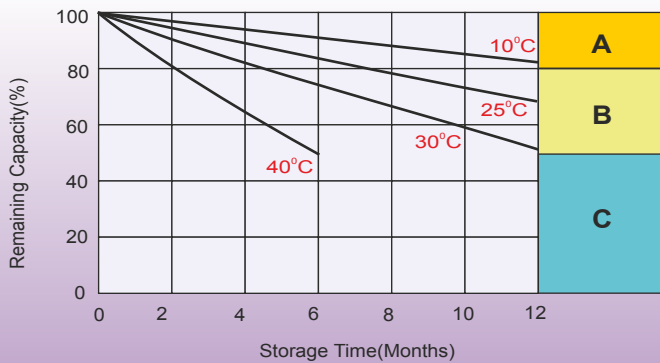
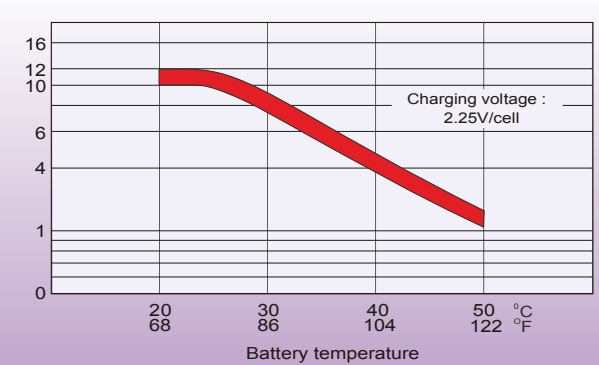
Float Charging Characteristics



Temperature Effects in Relation to Battery Capacity



Effect of Temperature on Long Term Float Life



Self Discharge Characteristics

A

No supplementary charge required
(Carry out supplementary charge before use if 100% capacity is required.)

B

Supplementary charge required before use. Optional charging way as below:
1. Charged for above 3 days at limited current 0.25CA and constant voltage 2.25V/cell.
2. Charged for above 20 hours at limited current 0.25CA and constant voltage 2.45V/cell.
3. Charged for 8-10 hours at limited current 0.05CA.

C

Supplementary charge may often fail to recover the capacity.
The battery should never be left standing till this is reached.

Sales Office

China sales office:

Add: 5th Floor, Xinbaohui Bldg., Nanhai Blvd.,
Nanshan, Shenzhen, China. 518052
Tel: +86-755-86036060 (100 lines)
Fax: +86-755-26067269
E-mail: export@leoch.com
Http://www.leoch.com

HongKong sales office:

Add: Workshop C, 33/F, TML Tower,
No. 3 Hoi Shing Road, Tsuen Wan,
New Territories, Hong Kong
Tel: +852 35786666
Fax: +852 21170016
E-mail: sales.hk@leoch.com

Singapore sales office:

Add: No. 1 Tech Park Crescent,
Singapore 638131
Tel: +65 6863 6078 (5 lines)
Fax: +65 6863 6079
Email: sales.sg@leoch.com

North America sales office:

Add: 19751 Descartes, Unit A,
Foothill Ranch, CA 92610, USA
Tel: 949-588-5853
Fax: 949-588-5966
E-mail: sales@leoch.us
Http://www.leoch.com

Europe sales office:

Add: 9B Wheatstone Court, Waterwells
Business Park, Gloucester, GL2-2AQ,
UK United Kingdom
Tel: +44(0) 1452 729428 / 1452 729696
Fax: +44 (0) 1452-690125
E-mail: Sales.Europe@leoch.com