

Superior LEAD CARBON AGM

SLCA-1295 DT (LDC12-90-G24 DT)

Features & Benefits

- True deep cycle AGM technology-GREEN SOLUTION
- Over 99.99% virgin lead for grid plate and active material
- Heavy duty grid/paste design for deep cycle application
- Maintenance free, non-spillable, valve-regulated
- Double separator configuration: long cycle life & High energy density and super anti-vibration design
- Low self-discharge for longer shelf life



Electrical Specifications

Voltage(V)	Capacity (AH)					Reserve Capacity (Min)		
	100HR	20HR	10HR	5HR	3HR	@25A	@56A	@75A
12	93	90	85	77	72	175	65	43

Physical Specifications

Model	Dimensions (mm/inches)				Weight (kg/lbs)	Terminal Type (Standard)	Case Material
	Length	Width	Height	Total Height			
LDC12-90-G24-DT	260 (10.24)	168 (6.61)	208 (8.19)	232.5 (9.15)	23.8 (52.5)	DT-5/16	ABS

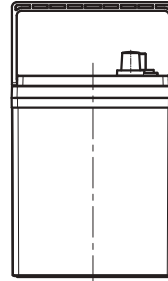
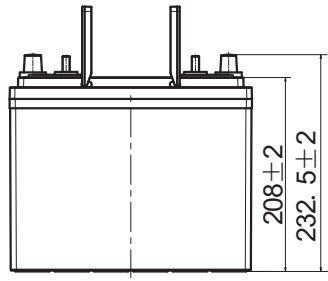
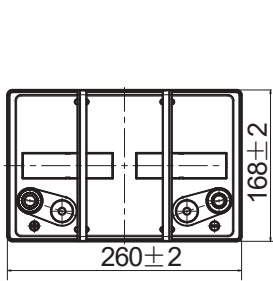
Operating Temperature Range		
Discharge	Charge	Storage
-15°C~50°C(5°F~122°F)	0°C~40°C(32°F~104°F)	-15°C~40°C(5°F~104°F)

Applications

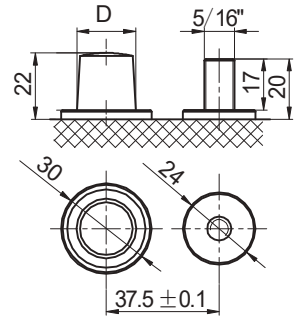
- ✓ Solar & Renewables
- ✓ Aerial Work Platform
- ✓ Golf Carts (Dual Seater) & Municipal Vehicles
- ✓ Marine
- ✓ Motorhome & Caravan
- ✓ Cleaning & Maintenance
- ✓ Materials Handling
- ✓ Vehicle Conversion

SLCA-1295 DT (LDC12-90-G24 DT)

Dimensions



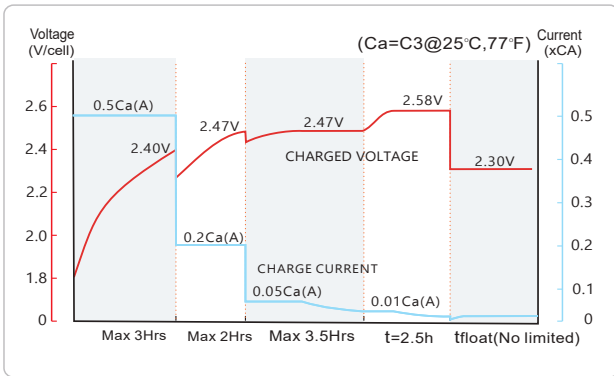
DT-5/16 Terminal



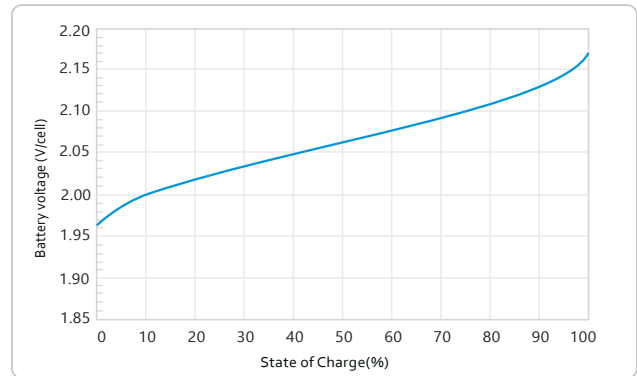
Note: D:Positive $19.5_{-0.3}^0$, D:Negative $17.9_{-0.3}^0$; Terminal Torque Values in-lb(Nm) : 176-203(20-23)

Performance Characteristics

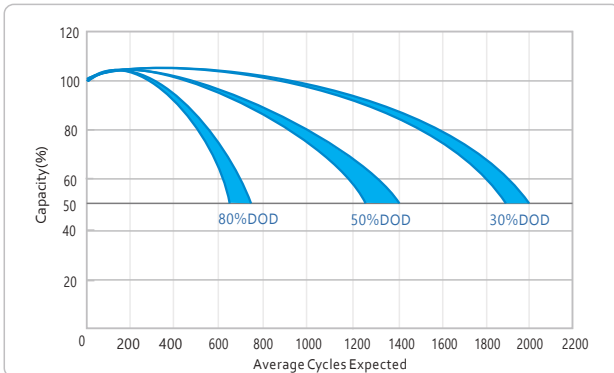
LEOCH LDC AGM Charging Profile



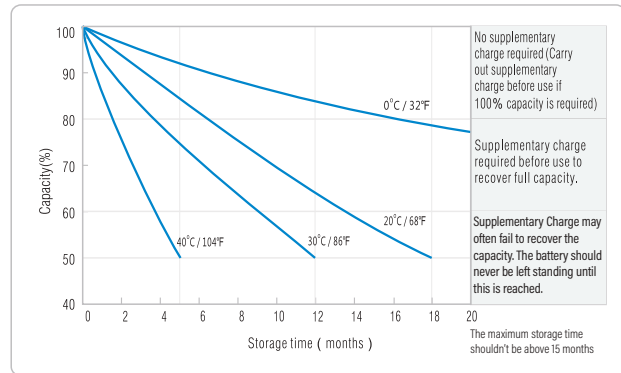
Relationship of OCV and State Of Charge (25°C, 77°F)



Cycle life in relation to Depth Of Discharge



Self-discharge Characteristic



DBS LEOCH

Unit B5, Welland Business Park,
Market Harborough, Leicestershire, LE16 7PS
T: 01858 433 330
E: sales@db sleoch.co.uk
www.db sleoch.co.uk

