

LAGM Series - Leisure

LAGM-120 (12V120AH)

Specification

Nominal Voltage	12V		
Nominal Capacity(100HR)	120.0AH		
Dimension	Length	305_2mm	(12.01 inches)
	Width	173_2mm	(6.81 inches)
	Container Height	212_2mm	(8.35 inches)
	Total Height (with Terminal)	220_2mm	(8.66 inches)
Approx Weight	Approx 28.0 Kg (61.1 lbs)		
Terminal	T11		
Container Material	ABS		
Rated Capacity	120.0 AH/1.2A	(100hr ,1.80V/cell,25°C/77°F)	
	105.0 AH/5.25A	(20hr ,1.80V/cell,25°C/77°F)	
	100.0 AH/10.0A	(10hr,1.80V/cell,25°C/77°F)	
	87.0 AH/17.4A	(5hr,1.75V/cell,25°C/77°F)	
	60.8 AH/60.8A	(1hr,1.60V/cell,25°C/77°F)	
Max. Discharge Current	1080A (5s)		
Internal Resistance	Approx 5mΩ		
Operating Temp.Range	Discharge	:-15~50°C (5~122°F)	
	Charge	: 0~40°C (32~104°F)	
	Storage	:-15~40°C (5~104°F)	
Nominal Operating Temp. Range	25±3°C (77±5°F)		
Cycle Use	Initial Charging Current less than	27.0A.Voltage	
		14.4V~15.0V at 25°C (77°F) Temp. Coefficient -30mV/°C	
Standby Use	No limit on Initial Charging Current Voltage		
		13.5V~13.8V at 25°C(77°F)Temp. Coefficient -20mV/°C	
Capacity affected by Temperature	40°C (104°F)	103%	
	25°C (77°F)	100%	
	0°C (32°F)	86%	
Self Discharge	Leoch LPS series batteries may be stored for up to 6 months at 25°C(77°F) and then a freshening charge is required. For higher temperatures the time interval will be shorter.		



Applications

- ◆ Solar power stations
- ◆ Telecommunications installations
- ◆ Measurement stations
- ◆ Pump systems
- ◆ Signal station
- ◆ Survey and Mapping system
- ◆ Emergency lighting
- ◆ Railway crossing
- ◆ Traffic lights
- ◆ Street lightening
- ◆ Lawn lamp
- ◆ Street signs
- ◆ SOS pillars
- ◆ Alarm installations
- ◆ Weekend cottage camping
- ◆ Caravans
- ◆ Boats or buoys



Constant Current Discharge (Amperes) at 25 °C (77°F)

F.V/Time	15min	20min	30min	45min	1h	2h	3h	4h	5h	8h	10h	20h	48h	100h
1.85V/cell	113.8	94.5	73.4	58.1	47.0	30.7	23.1	19.0	16.0	11.2	9.58	5.09	2.29	1.18
1.80V/cell	126.1	103.9	79.2	61.7	49.6	32.6	24.4	19.9	16.8	11.7	10.0	5.25	2.33	1.20
1.75V/cell	139.9	113.9	85.2	66.0	53.5	34.2	25.8	20.7	17.5	12.1	10.2	5.36	2.36	1.21
1.70V/cell	152.8	124.4	93.6	68.9	56.5	36.0	27.0	21.6	18.2	12.5	10.5	5.47	2.39	1.23
1.65V/cell	161.8	131.2	98.6	73.2	58.5	37.3	28.0	22.4	18.8	12.9	10.8	5.60	2.44	1.24
1.60V/cell	177.4	142.5	104.8	75.9	60.8	38.8	28.9	23.1	19.5	13.2	11.0	5.73	2.48	1.25

Constant Power Discharge (Watts/cell) at 25 °C (77°F)

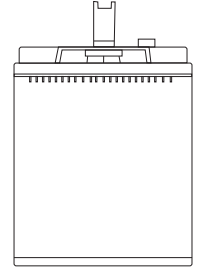
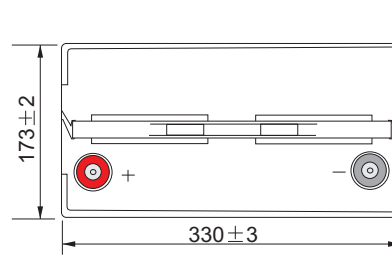
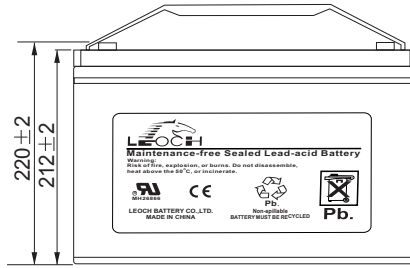
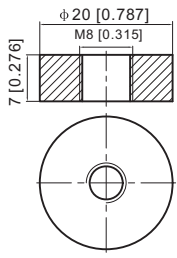
F.V/Time	15min	20min	30min	45min	1h	2h	3h	4h	5h	8h	10h	20h	48h	100h
1.85V/cell	213.4	179.1	140.6	112.3	91.5	59.8	45.3	37.2	31.6	22.2	19.1	10.1	4.58	2.31
1.80V/cell	233.4	194.1	149.4	117.8	95.7	63.2	47.5	38.8	33.0	23.2	19.9	10.4	4.64	2.35
1.75V/cell	255.8	210.6	159.4	125.3	102.7	66.0	50.0	40.4	34.1	23.9	20.3	10.6	4.71	2.36
1.70V/cell	275.6	228.3	174.2	130.4	108.1	69.4	52.3	42.0	35.4	24.7	20.9	10.8	4.76	2.39
1.65V/cell	290.7	240.0	182.7	137.9	111.5	71.5	54.1	43.4	36.6	25.3	21.3	11.1	4.84	2.42
1.60V/cell	312.2	256.8	192.1	141.5	114.8	74.0	55.6	44.5	37.7	25.9	21.8	11.3	4.91	2.44



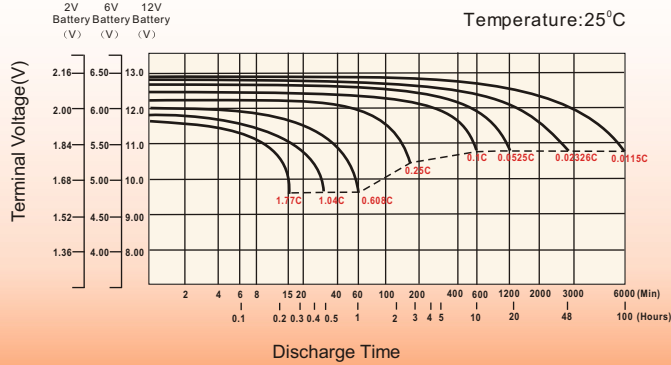
Dimensions

T11 Terminal

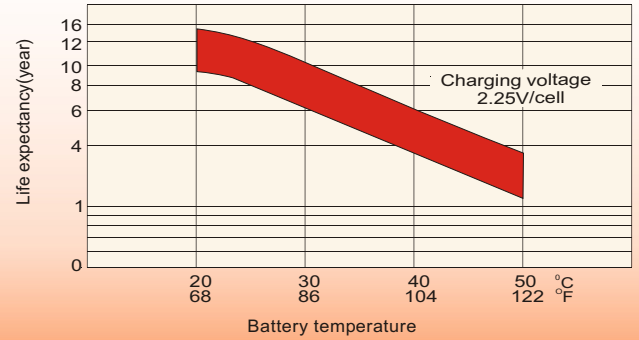
Unit: mm [inches]



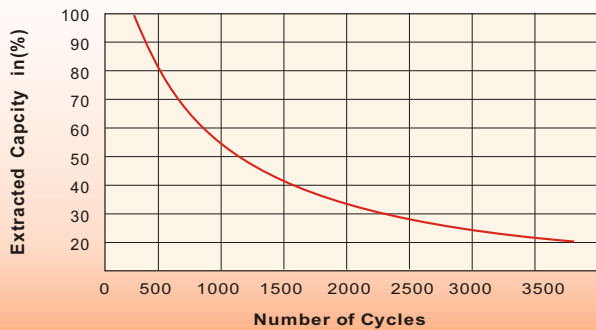
Discharge Characteristics



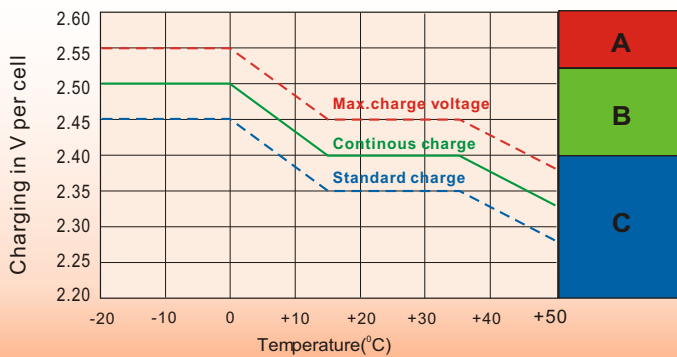
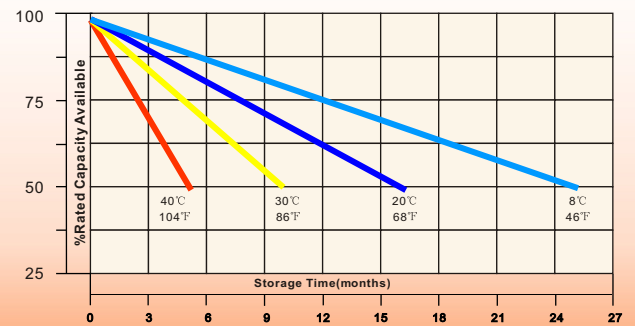
Effect of Temperature on Long Term Float Life



Cycle Service Life



Self-Discharge at Different Temperatures



Charge Mode

- A** With switch regulator (two-step controller) charge on curve max.charge voltage for max.2 hrs/day then switch over to continuous charge
- B** Standard charge without switching
- C** Boost charge (Equalizing charge with external generator) charge on curve continuous charge for max. 5 hrs/month, then switch over to curve Standard charge

Sales Office

China sales office:

Add:5th Floor,Xinbaohui Bldg.,Nanhai Blvd.,
Nanshan,Shenzhen, China. 518052
Tel:+ 86-755-86036060 (100 lines)
Fax: +86-755-26067269
E-mail:export@leoch.com
Http://www.leoch.com

HongKong sales office:

Add: Workshop C, 33/F, TML Tower,
No. 3 Hoi Shing Road, Tsuen Wan,
New Territories, Hong Kong
Tel: +852 35786666
Fax: +852 21170016
E-mail: sales.hk@leoch.com

Singapore sales office:

Add: No. 1 Tech Park Crescent,
Singapore 638131
Tel: +65 68416629
Fax: +65 68443210
Email: sales.sg@leoch.com

North America sales office:

Add: 19751 Descartes, Unit A,
Foothill Ranch, CA 92610, USA
Tel: 949-588-5853
Fax: 949-588-5966
E-mail: sales@leoch.us
Http://www.leoch.com

Europe sales office:

Add: 9B Wheatstone Court, Waterwells
Business Park, Gloucester, GL2-2AQ,
UK United Kingdom
Tel: +44(0) 1452 729428 / 1452 729696
Fax: +44 (0)1452-690125
E-mail: Sales.Europe@leoch.com